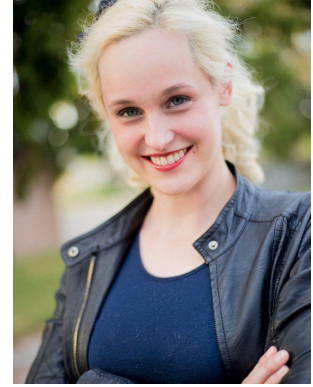


Erin Walker

3650 Lobsinger Line
St. Clements, ON
(519) 218-7777
ewalker2010@gmail.com

Height: 5'4" Eyes: Blue
Vocal Range: E3-C6
(Mezzo-Soprano)



Skills Summary

Skilled semi-professional musician with strong ability to learn music quickly (excellent sight reader) and independently.

Able to master dance choreography with slow practice and extensive at-home repetition between rehearsals.

Strong work ethic, self-discipline and interpersonal skills, evidenced by high-level academic achievement and professional success.

Stage Experience

All Together Now! / Musical Director / Director of "Gimme Gimme" and "Empty Chairs at Empty Tables"

November 2021- Ayr Community Theatre

Hello, Dolly! (Blind Date Musical Theatre) / Ensemble

June 2019- Lost and Found Theatre

Mary Poppins / Miss Smythe, Suffragette (Ensemble)

May 2017- The Community Players of New Hamburg

Don't Make Me Take My Pants Off / Improv Comedy

Performance, London Fringe Festival

June 2016- Stratford Improv

The Rocky Horror Show / "Once in Awhile" trio, Phantom

May/October 2015- Royal City Musical Productions Inc.

Ragtime / Baron's Assistant, New Rochelle Ensemble

May 2014- The Community Players of New Hamburg

Fiddler on the Roof / "Irina Soloman" (Villager), Klezmer Band

Violinist (Wedding Introduction)

May 2013 - The Community Players of New Hamburg

Joseph and the Amazing Technicolour Dreamcoat / Singing

Mummy (Solo in "Poor Poor Joseph"), Ensemble

July 2000 - Catholic School Board Performing Arts Summer School Program

Fame/ Mrs. Myers (Drama teacher), Ensemble

July 1999 - Catholic School Board Performing Arts Summer School Program

Into the Woods/Ensemble

July 1998 - Catholic School Board Performing Arts Summer School Program

Bye Bye Birdie/ Reporter #3, Parent, Ensemble

July 1997 - Catholic School Board Performing Arts Summer School Program

Musical Skills

Private Voice Lessons / Teachers: James McLean (2015), Lynn Scott (2017), Deva Neely (2019-2020)

September 2013-2020

Pianist / ARCT Level

Performed Beethoven's "Archduke" Trio (Movement I-Allegro Moderato) at the Music Room (KWCO Chamber Music Concert, June 2012)

Won 1st place in Grade 8 Sight Reading, 3rd Place in Grade 8 "List B" Classes, Kiwanis Festival (2000)

Semi-Professional Musician / Various instruments

Plays double bass, cello, violin, mandolin, tenor recorder and kazoo in pit orchestras for various local community theatre productions (see below.)

Arranged double bass part for Sleepy Hollow using piano/vocal score.

Composed original fiddle part for Godspell "We Beseech Thee."

Improvised performance at "Michael Klein Live" Benefit concerts (2016 and 2017, bass guitar and cello)

Dance Experience

Ballroom Dance Lessons / Fred Astaire Dance Studio Social Ease Program

September 2018-March 2019

Ballet Lessons/ Ewald's Academy of Dance, Bojangles

September 1987-June 1989

Instrumental Experience

Matilda/ Cello

November 2022 - Royal City Musical Productions Inc.

Guelph Symphony Orchestra/ Cello (substitute player)

May 2022

All Together Now!/ Keyboard 2

November 2021 - Royal City Musical Productions Inc.

Upstart 20 Festival / Cello, Violin

March 2020 - "All Art is Really Quite Useless," University of Waterloo

Guelph Symphony Orchestra / Cello

February 2020 - Guelph, ON

The Hunchback of Notre Dame / Cello, Violin

May 2019 - The Community Players of New Hamburg

Titanic / Double Bass

February 2019 - KW Musical Productions

Annie/ Violin, Cello

November 2018 - Royal City Musical Productions Inc.

You're a Good Man, Charlie Brown / Bass Guitar, Double Bass, Tenor Recorder, Kazoo

August 2018 - JM Drama

Oliver! / Cello, Mandolin, Violin ("Reviewing the Situation" onstage soloist)

May 2018 - The Community Players of New Hamburg

Hello, Dolly! / Cello

November 2017 - Perth County Players

Godspell / Bass Guitar, Fiddle

August 2017 - JM Drama

The Rocky Horror Show / Bass Guitar

August 2016 - JM Drama

Sleepy Hollow / Double Bass

May 2016- Elmira Theatre Company

Fiddler on the Roof / Cello

November 2015 - Royal City Musical Productions Inc.

H.M.S. Pinafore / Double Bass

September 2015 - Guelph Little Theatre/Royal City Musical Productions Inc.

Next To Normal / Bass Guitar, Double Bass

August 2015 - JM Drama

Academic Background

L.L.M/ Master of Laws

2022-2024 - Osgoode Hall Law School, York University

M.B.A./ Master of Business Administration

2017-2020 - Wilfrid Laurier University

D.D.S. / Doctor of Dental Surgery

2006-2010 - University of Western Ontario

B.Sc / Neuroscience

2002-2006 - Dalhousie University (Dean's List 2003)